

PowerMonitor 5000 USB Driver

Bulletin Number 1426

Topic	Page
Overview	1
Summary of Changes	2
Download the USB Driver	2
Install Drivers	7
Configure the Connection	10
Browse the PowerMonitor 5000 Web Page by Using the USB Connection	13
Additional Resources	13

Overview

The USB device port can be used to create a temporary, point-to-point connection between a personal computer and the PowerMonitor™ 5000 unit. This connection is used for configuration, data monitoring, diagnostics, and maintenance by using the built-in web pages from the unit. The USB device port is a standard USB Mini-B receptacle. Install drivers to enable USB communication.

To connect your personal computer to the PowerMonitor 5000 unit, use a standard USB cable with a Type-A and Mini-B male plugs.

Summary of Changes

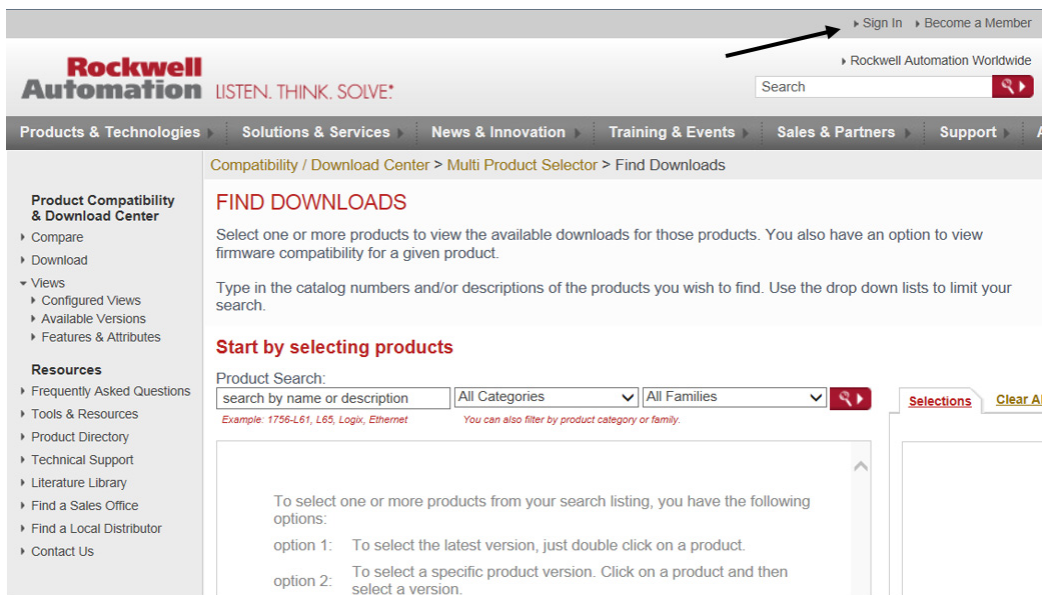
This publication contains new and updated information as indicated in the following table.

Topic	Page
Added the procedure to download a driver.	2
Updated Install Drivers topic.	7

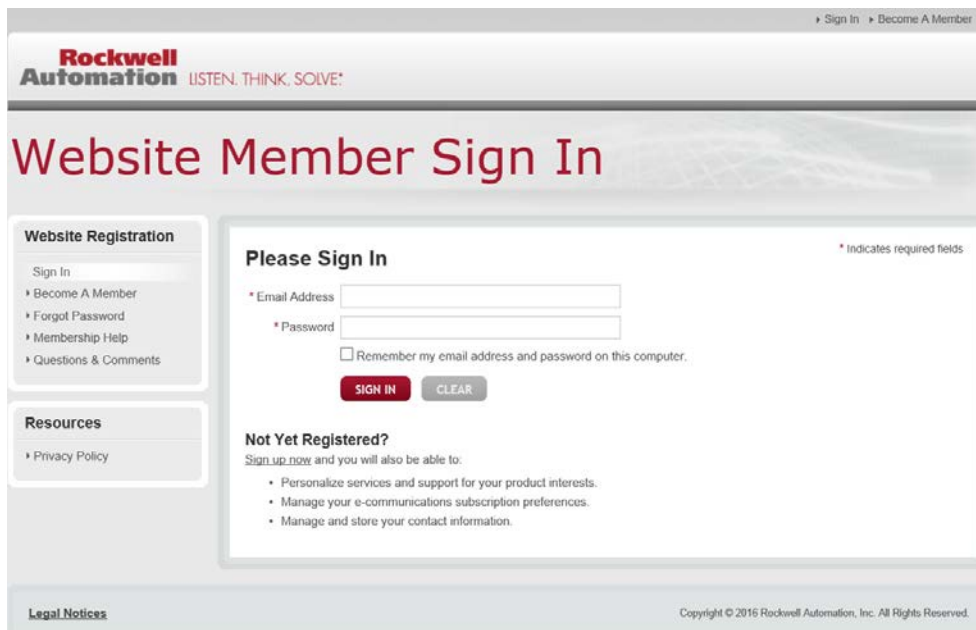
Download the USB Driver

To download the USB driver, follow these steps.

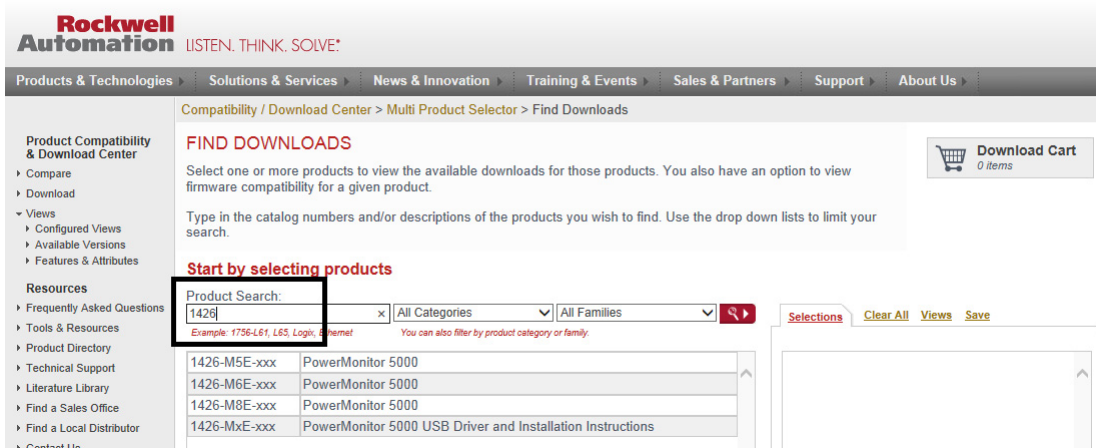
1. Navigate to <http://compatibility.rockwellautomation.com/Pages/MultiProductDownload.aspx?crumb=112> and click sign in.



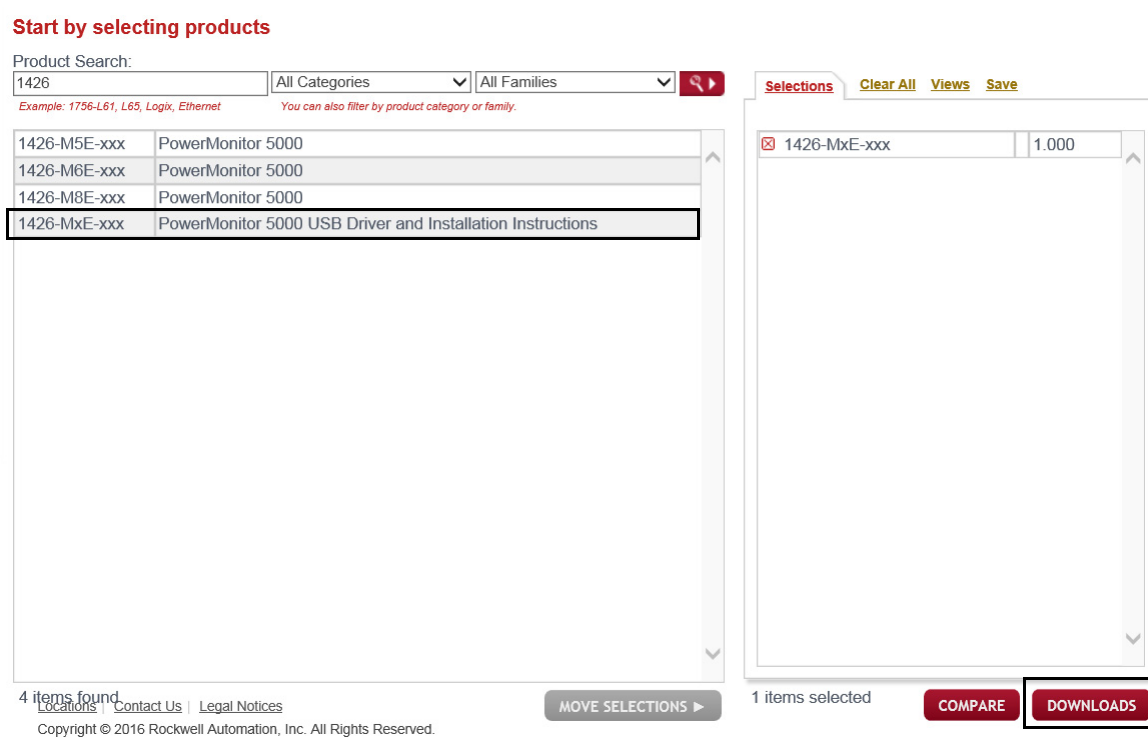
2. Enter your Email Address, Password, and click Sign In.



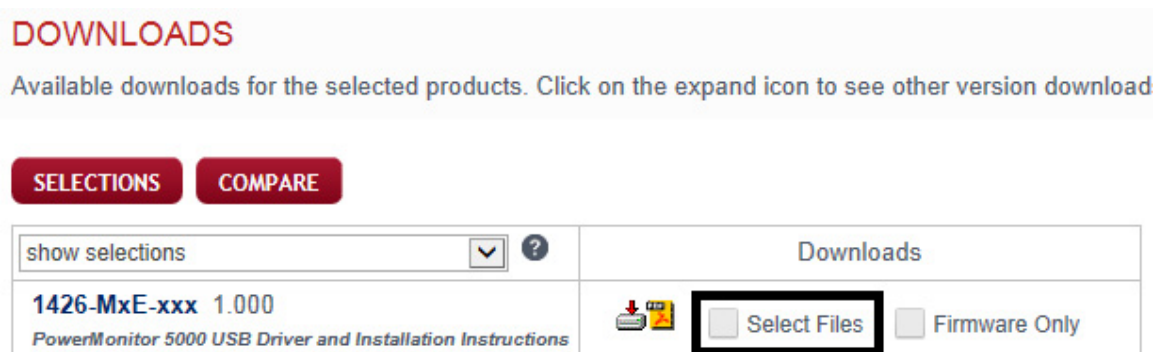
- Enter 1426 in the Product Search window.



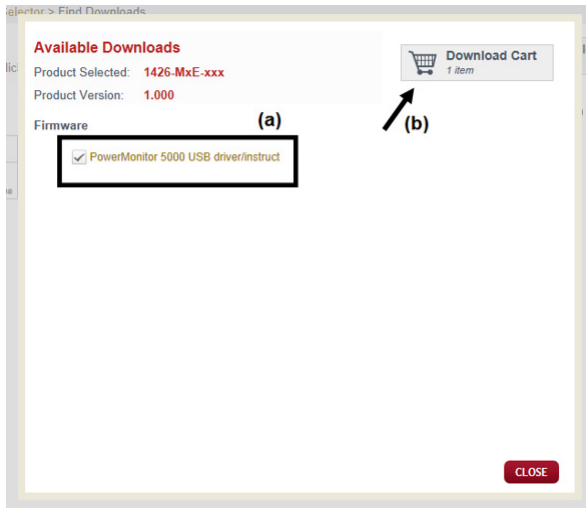
- Select PowerMonitor 5000 USB Driver and Installation Instructions and then click Downloads.



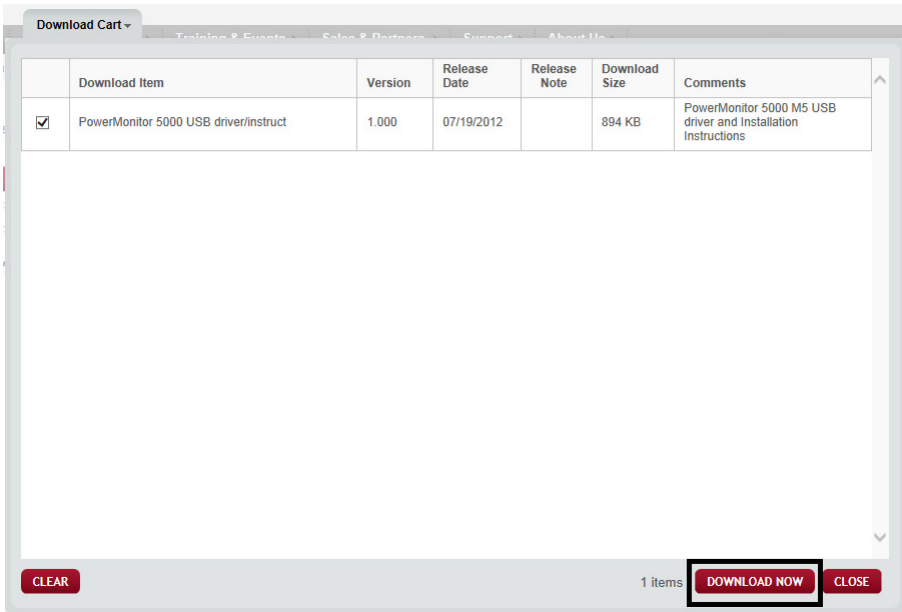
- Click Select Files.



6. Select PowerMonitor 5000 USB driver/instruct (a) and click Download Cart (b).

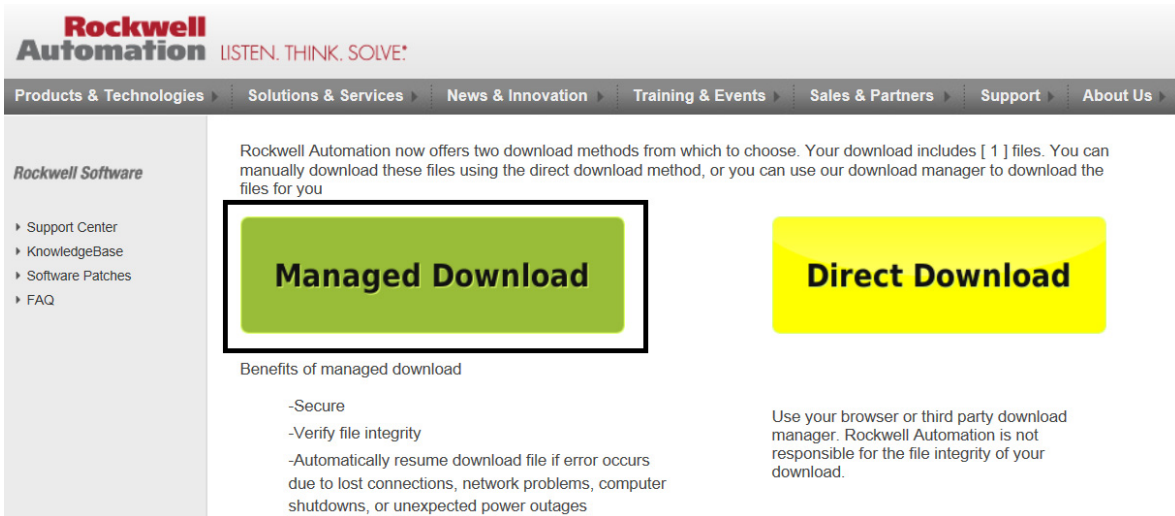


7. Click Download Now.



8. Read the End-User Software Agreement and click Accept.

9. Click Managed Download.



Rockwell Automation LISTEN. THINK. SOLVE.®

Products & Technologies | Solutions & Services | News & Innovation | Training & Events | Sales & Partners | Support | About Us

Rockwell Software

- Support Center
- KnowledgeBase
- Software Patches
- FAQ

Rockwell Automation now offers two download methods from which to choose. Your download includes [1] files. You can manually download these files using the direct download method, or you can use our download manager to download the files for you

Managed Download

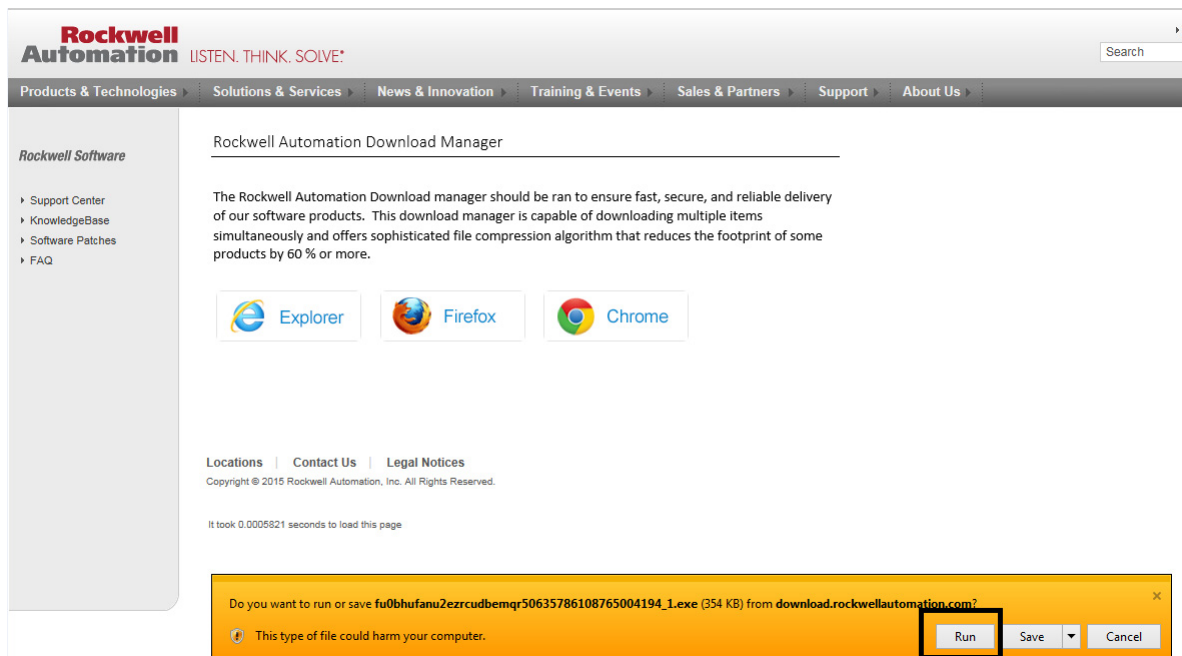
Benefits of managed download

- Secure
- Verify file integrity
- Automatically resume download file if error occurs due to lost connections, network problems, computer shutdowns, or unexpected power outages

Direct Download

Use your browser or third party download manager. Rockwell Automation is not responsible for the file integrity of your download.

10. Click Run.



Rockwell Automation LISTEN. THINK. SOLVE.®




Products & Technologies | Solutions & Services | News & Innovation | Training & Events | Sales & Partners | Support | About Us

Rockwell Software

- Support Center
- KnowledgeBase
- Software Patches
- FAQ

Rockwell Automation Download Manager

The Rockwell Automation Download manager should be ran to ensure fast, secure, and reliable delivery of our software products. This download manager is capable of downloading multiple items simultaneously and offers sophisticated file compression algorithm that reduces the footprint of some products by 60 % or more.

 Explorer
  Firefox
  Chrome

Locations | Contact Us | Legal Notices
Copyright © 2015 Rockwell Automation, Inc. All Rights Reserved.

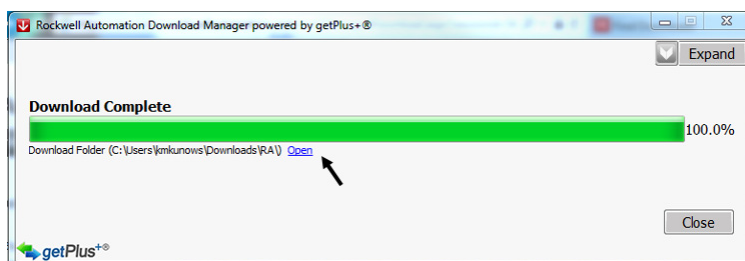
It took 0.0005921 seconds to load this page

Do you want to run or save fu0bhufanu2ezrcudbemqr50635786108765004194_1.exe (354 KB) from download.rockwellautomation.com?

This type of file could harm your computer.

Run Save Cancel

11. When download is complete, click Open under the green status bar.



Rockwell Automation Download Manager powered by getPlus+®

Expand

Download Complete

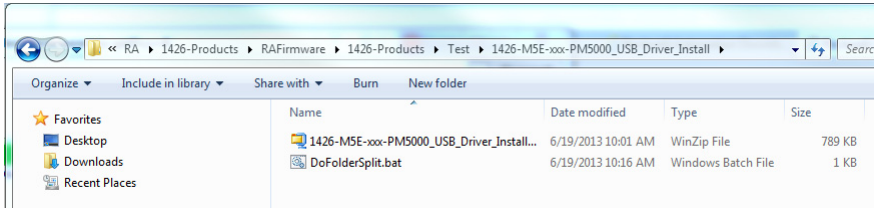
Download Folder (C:\Users\jmkunows\Downloads\RA\): [Open](#)

Close

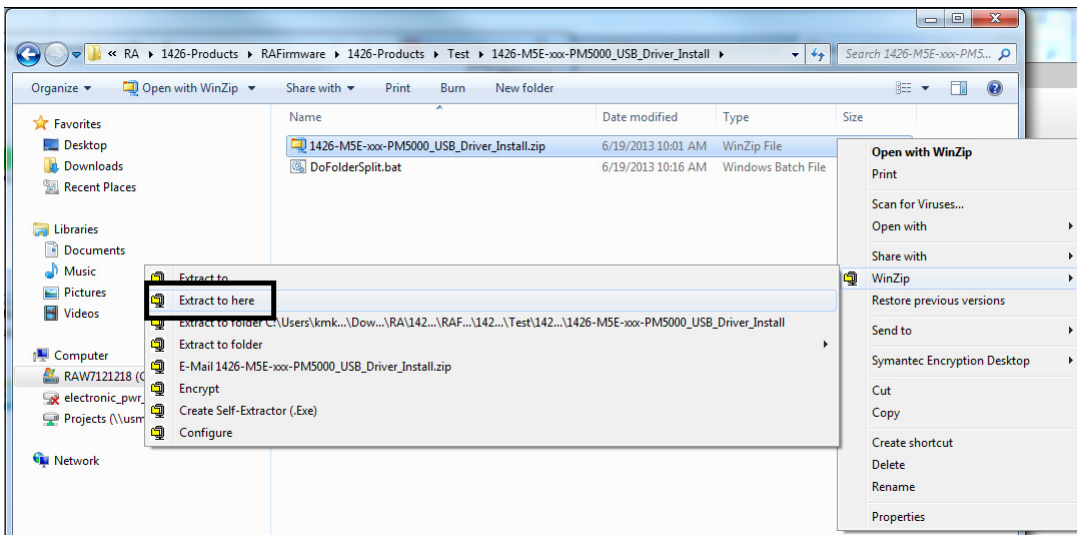
getPlus+®

- In the Windows Explorer window that opens, navigate to 1426-Products > RAFirmware > 1426-Products > Test > 1426-M5E-xxx-PM5000_USB_Driver_Install.

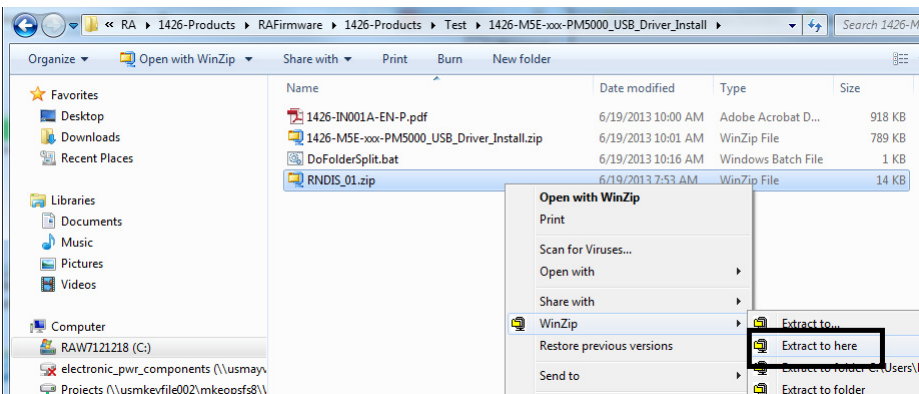
TIP The full path to access the file is: Downloads > RA > 1426-Products > RAFirmware > 1426-Products > Test > 1426-M5E-xxx-PM5000_USB_Driver_Install.



- Right-click on the zipped folder and extract the files.



- Right-click on zipped folder RNDIS_01.zip and extract files.



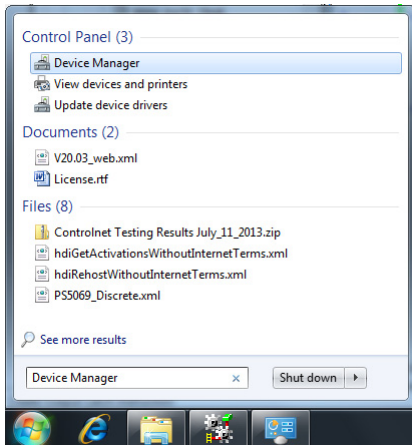
- Close the Rockwell Automation® Download Manager and sign out of RockwellAutomation.com.

Install Drivers

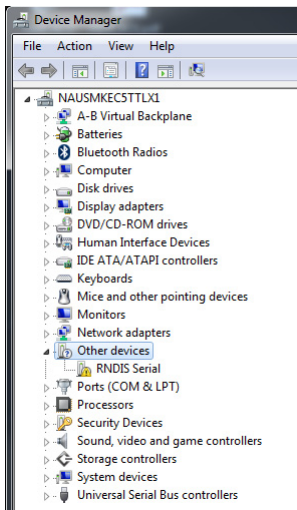
To install the USB driver, follow these steps.

The following procedure applies to the Windows 7 operating system. Installation and connection configuration steps vary with different operating systems.

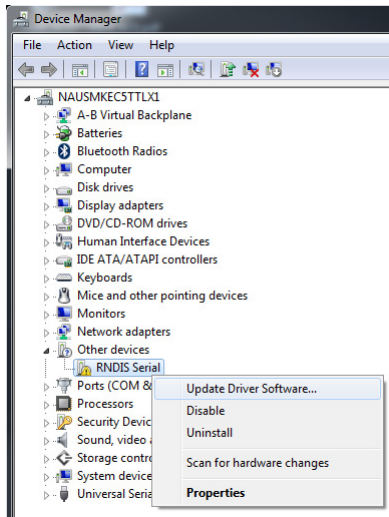
1. Connect the PowerMonitor 5000 unit to your computer by using a USB cable and apply power to the power monitor.
If the device does not automatically install or fails to install, follow these steps.
2. Open the Start menu and search for Device Manager. Click Device Manager to open.



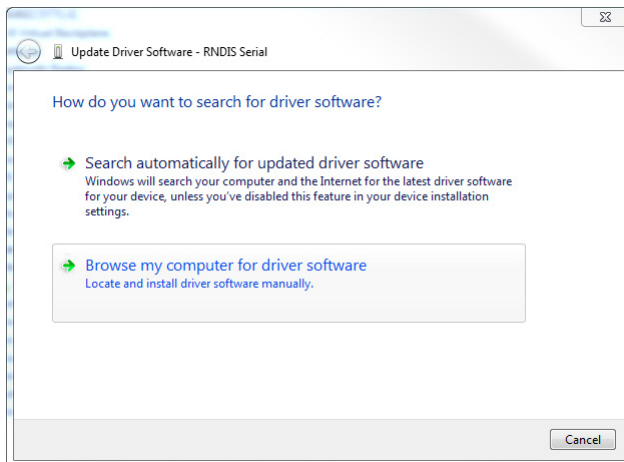
3. In Device Manager, open Other devices.



4. Right-click RNDIS Serial and select Update Driver Software.

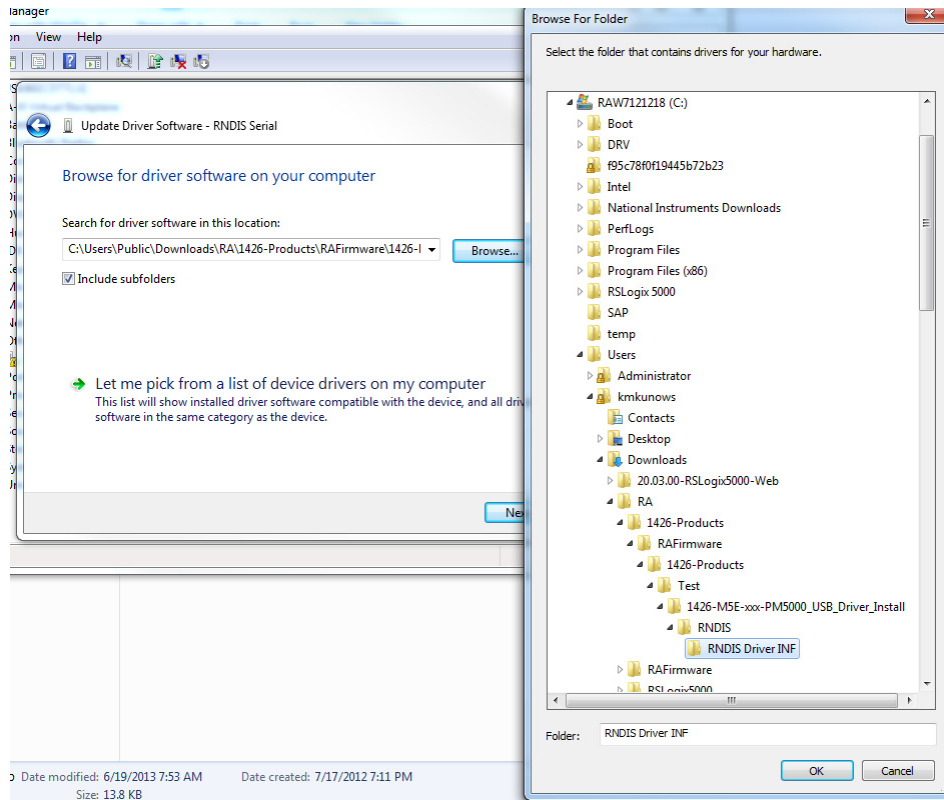


5. Select Browse my computer for driver software.

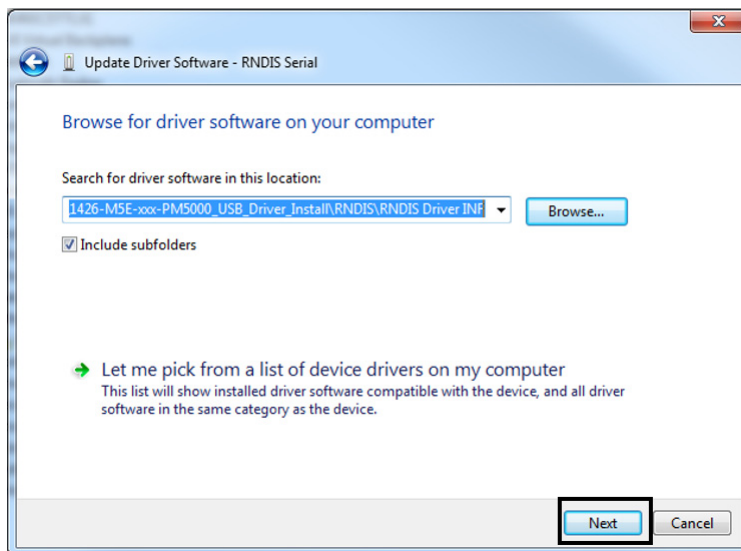


- Click Browse and navigate to the RNDIS Driver INF folder and click OK.

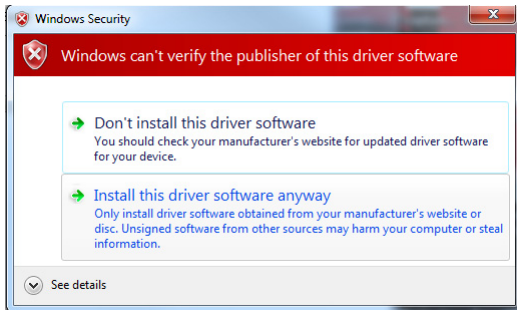
TIP The full path to access the file is: Downloads > RA > 1426-Products > RAFirmware > 1426-Products > Test > 1426-M5E-xxx-PM5000_USB_Driver_Install > RNDIS > RNDIS Driver INF.



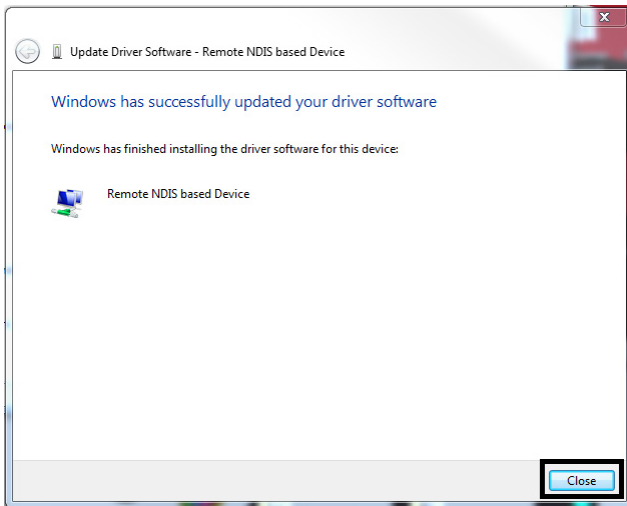
- Click Next.



8. If a windows security window pops up, click 'Install this driver software anyway'.



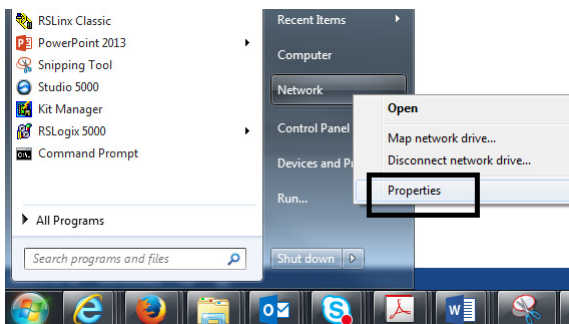
9. When the driver successfully installs, click Close.



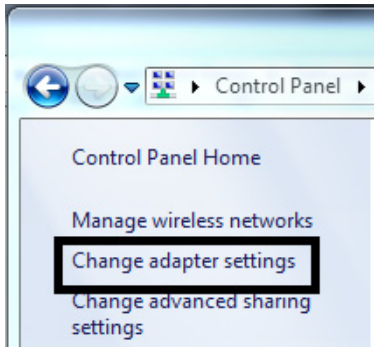
Configure the Connection

To configure the connection, follow these steps.

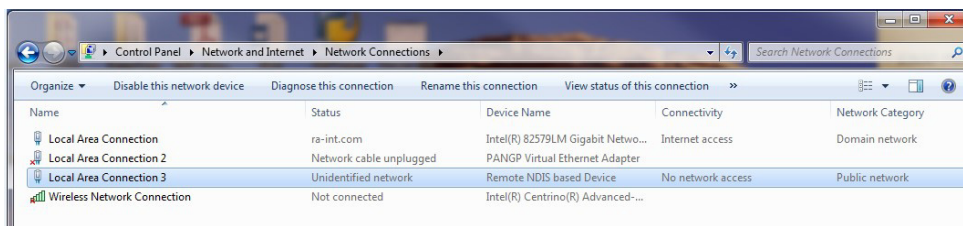
1. From the Start menu on your computer, right-click Network, and select Properties.



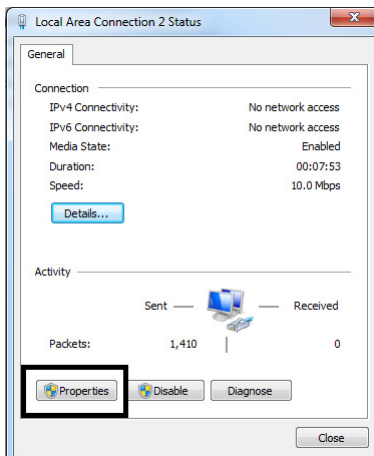
2. Click Change adapter settings.



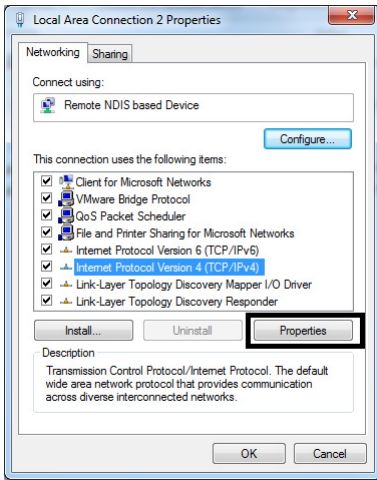
3. Verify that the PowerMonitor 5000 is connected to the personal computer by using the USB cable. Double-click Local Area Connection associated with the Remote NDIS-based Device.



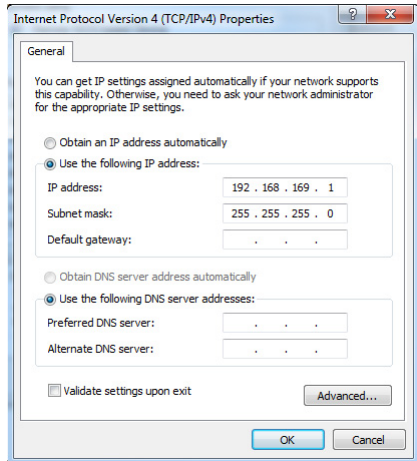
4. Click Properties.



5. Select Internet Protocol Version 4 (TCP/IPv4) and click Properties.



6. Select Use the following IP address, enter the IP address: 192.168.169.1.
The default subnet mask 255.255.255.0 is correct. Note: The default IP address of the PowerMonitor 5000 unit is 192.168.169.3.



7. Then, click OK.
Your connection has now been configured and you can browse the PowerMonitor 5000 web page by using the USB connection.

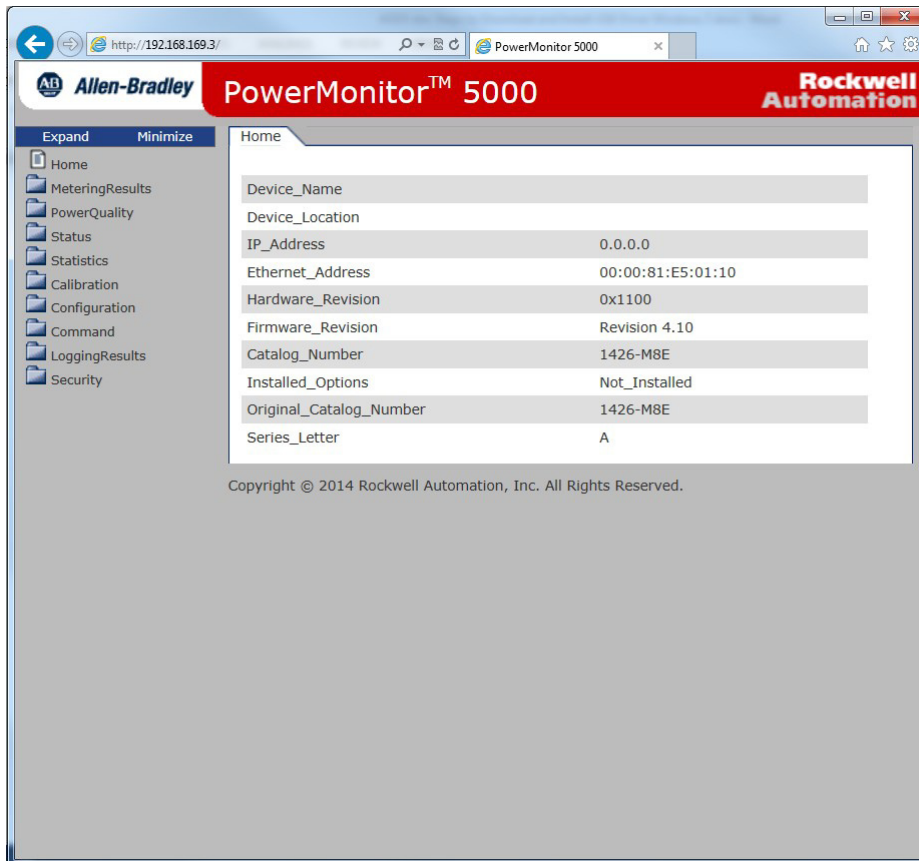
Browse the PowerMonitor 5000 Web Page by Using the USB Connection

Follow these steps to browse the PowerMonitor 5000 unit.

1. Open the Internet Explorer web browser on the computer and browse to the url <http://192.168.169.3>.

The PowerMonitor 5000 web page displays in your browser.

IMPORTANT Your browser must have Allow Scriptlets set to Enable for the applicable security zone for configuration changes to be made to the power monitor by using the web page.



By default the security setting of the power monitor web page is disabled.

2. If you would like to enable security, refer to the PowerMonitor 5000 Unit User Manual, publication [1426-UM001](#) for more information.

Additional Resources

These documents contain additional information concerning related products from Rockwell Automation.

Resource	Description
PowerMonitor 5000 Unit User Manual, publication 1426-UM001	Provides information on the installation, configuration, and use of the PowerMonitor 5000 unit.
Industrial Automation Wiring and Grounding Guidelines, publication 1770-4.1	Provides general guidelines for installing a Rockwell Automation industrial system.
Product Certifications website, http://www.rockwellautomation.com/global/certification/overview.page	Provides declarations of conformity, certificates, and other certification details.

You can view or download publications at <http://www.rockwellautomation.com/global/literature-library/overview.page>. To order paper copies of technical documentation, contact your local Allen-Bradley distributor or Rockwell Automation sales representative.

Rockwell Automation Support

Use the following resources to access support information.

Technical Support Center	Knowledgebase Articles, How-to Videos, FAQs, Chat, User Forums, and Product Notification Updates.	https://rockwellautomation.custhelp.com/
Local Technical Support Phone Numbers	Locate the phone number for your country.	http://www.rockwellautomation.com/global/support/get-support-now.page
Direct Dial Codes	Find the Direct Dial Code for your product. Use the code to route your call directly to a technical support engineer.	http://www.rockwellautomation.com/global/support/direct-dial.page
Literature Library	Installation Instructions, Manuals, Brochures, and Technical Data.	http://www.rockwellautomation.com/global/literature-library/overview.page
Product Compatibility and Download Center (PCDC)	Get help determining how products interact, check features and capabilities, and find associated firmware.	http://www.rockwellautomation.com/global/support/pcdc.page

Documentation Feedback

Your comments will help us serve your documentation needs better. If you have any suggestions on how to improve this document, complete the How Are We Doing? form at http://literature.rockwellautomation.com/idc/groups/literature/documents/du/ra-du002_-en-e.pdf.

Rockwell Automation maintains current product environmental information on its website at <http://www.rockwellautomation.com/rockwellautomation/about-us/sustainability-ethics/product-environmental-compliance.page>.

Allen-Bradley, PowerMonitor, Rockwell Automation, and Rockwell Software are trademarks of Rockwell Automation, Inc. Trademarks not belonging to Rockwell Automation are property of their respective companies.

Rockwell Otomasyon Ticaret A.Ş., Kar Plaza İş Merkezi E Blok Kat:6 34752 İçerenköy, İstanbul, Tel: +90 (216) 5698400

www.rockwellautomation.com

Power, Control and Information Solutions Headquarters

Americas: Rockwell Automation, 1201 South Second Street, Milwaukee, WI 53204-2496 USA, Tel: (1) 414.382.2000, Fax: (1) 414.382.4444
Europe/Middle East/Africa: Rockwell Automation NV, Pegasus Park, De Kleetlaan 12a, 1831 Diegem, Belgium, Tel: (32) 2 663 0600, Fax: (32) 2 663 0640
Asia Pacific: Rockwell Automation, Level 14, Core F, Cyberport 3, 100 Cyberport Road, Hong Kong, Tel: (852) 2887 4788, Fax: (852) 2508 1846

Publication 1426-IN001B-EN-P - March 2016

Supersedes Publication 1426-IN001A-EN-P - July 2012

Copyright © 2016 Rockwell Automation, Inc. All rights reserved. Printed in the U.S.A.